

INSTRUCTION MANUAL

MODULAR WALL VENT (MWV)

A ATTACHING HOOD

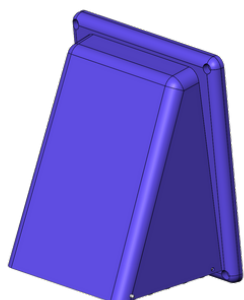
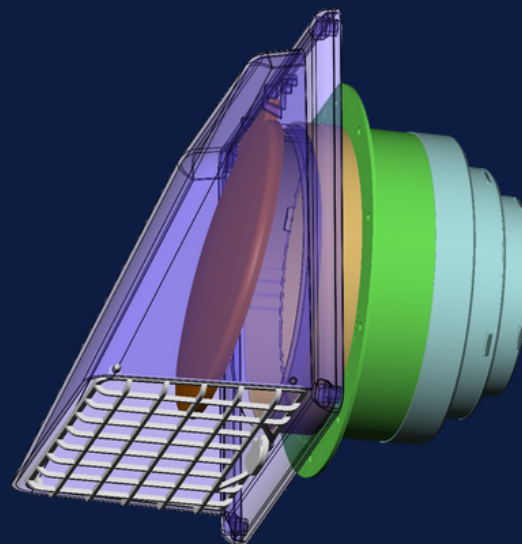
B INSERTING DAMPER

C INSERTING SCREENS

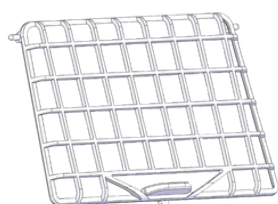
D UNDER EAVE APPLICATION

E J-CHANNEL APPLICATION

F REDUCER APPLICATION



A2 Hood



C1 1/4 Inch Screen



C2 Micro Screen



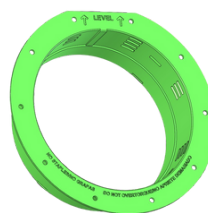
B1 Wall Vent Damper



E1 J-Channel



F1 Reducer



A1 Flange



D1 Under Eave Damper

MODULAR WALL VENT (MWV) INSTALLATION DETAILS

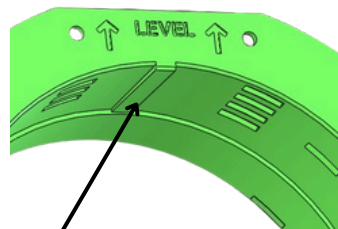


Uses of Application:

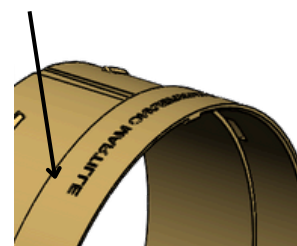
- Wall Intake or exhaust applications
- Kitchen, bath or dryer exhaust
- Devices that require intake such as HRV and ERV systems
- Fresh Air make-up
- Wall mount or under-eave applications
- Removable hood for cleaning

Tab and Slot system:

- All pieces connect using a Tab and Slot System
- Tabs and slots are located on the top, interior surface of each part
- Maintains proper orientation and ensures level installation



Slot



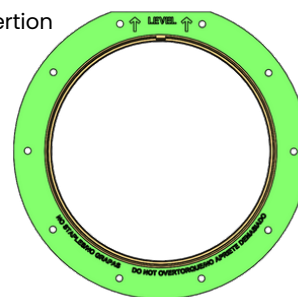
A MODULAR WALL VENT (MWV) ATTACHING HOOD

1 INSERTING FLANGE

Instructions:

- Identify location where the duct terminates to wall
- Mark center location and trace 6 1/8" hole
- Cut hole using appropriate saw or blade
- Insert flange into hole and level using top edge
- Attach to sheathing using appropriate screws
- **DO NOT USE PNEUMATIC TOOLS**

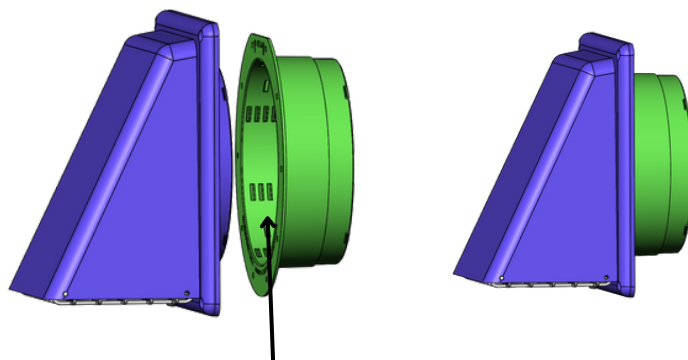
Flat top for level insertion



2 ATTACHING HOOD

Instructions:

- Locate aligning tab on top of flange
- Find aligning slot on top of hood
- Matching tab to slot, gently insert hood into flange until the hood is fully inserted
- Attach hood to sheathing using appropriate screws in corners
- **DO NOT USE PNEUMATIC TOOLS**



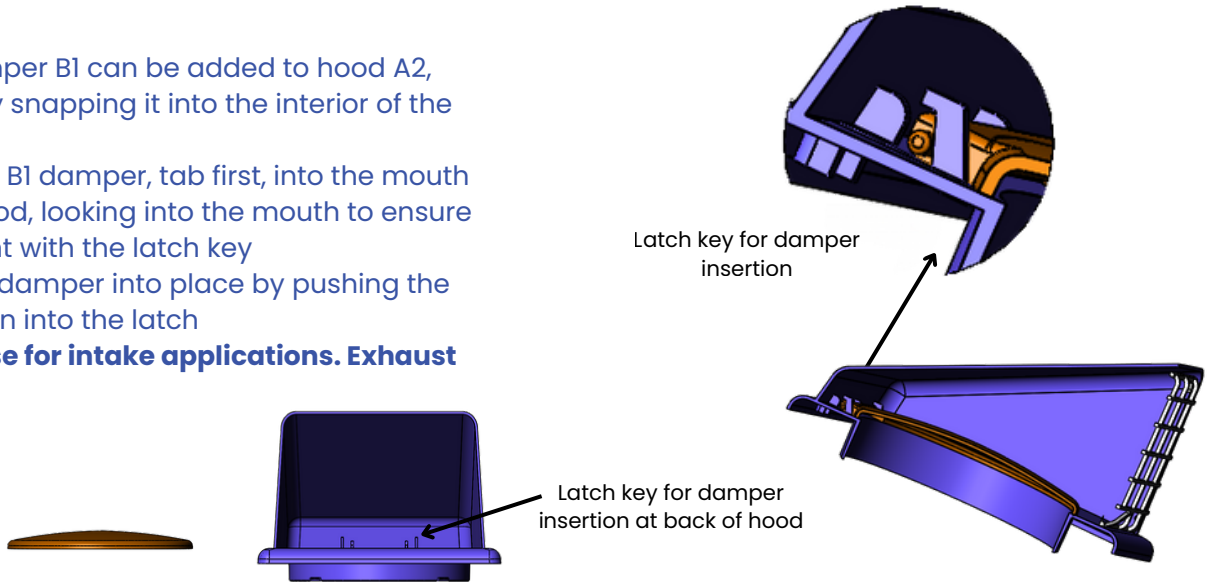
Tab and slot system for hood insertion

B MODULAR WALL VENT (MWV) INSERTING DAMPER



Instructions:

- Wall damper B1 can be added to hood A2, simply by snapping it into the interior of the hood
- Insert the B1 damper, tab first, into the mouth of the hood, looking into the mouth to ensure alignment with the latch key
- Click the damper into place by pushing the tabs down into the latch
- **Do not use for intake applications. Exhaust only.**

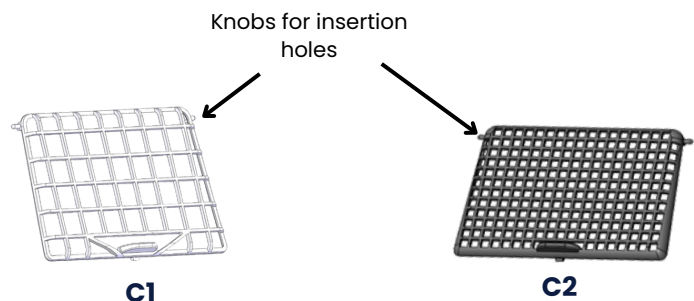


C MODULAR WALL VENT (MWV) ATTACHING SCREEN

1 SCREEN OPTIONS

Instructions:

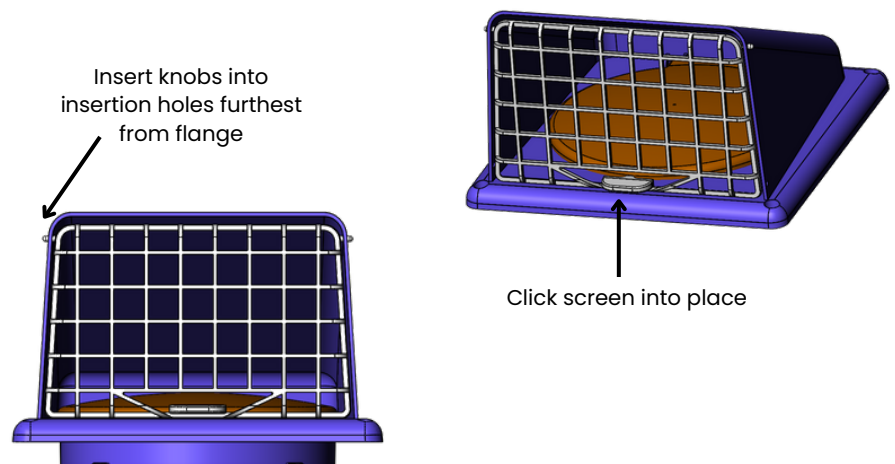
- We provide two screen options, C1 (1/4" screen) and C2 (micro screen) that can be added to hood A2
- Microscreen for 4" duct applications only
- **Do not use for dryer applications**



2 ASSEMBLY

Instructions:

- Insert knobs of screen into holes on either side, then secure the screen at the bottom with the latch



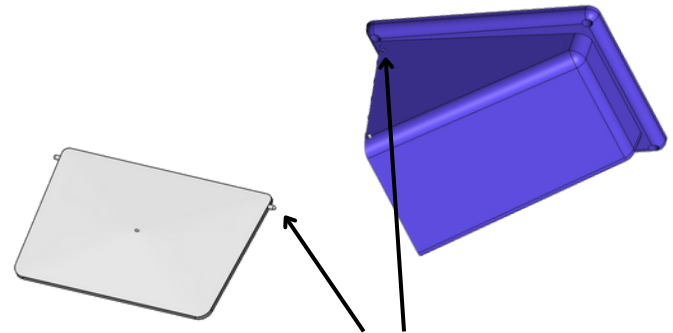
D MODULAR WALL VENT (MWV) UNDER EAVE APPLICATION



1 UNDER EAVE DAMPER

Instructions:

- Damper D1 can be added to hood A2 for soffit or under eave exhaust applications
- The Under Eave Damper provides a seal to prevent unwanted air infiltration and resist pests
- **Do not use for intake applications**



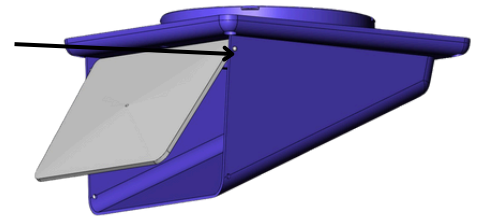
Knobs on damper for insertion. Insertion point near the flange on hood

2 ASSEMBLY

Instructions:

- Locate the two knobs on the damper, inserting one into the insertion holes closest to the hood flange
- Gently tilt the damper down to allow the second knob to slide along the interior of the hood eventually inserting it into the second hole

Insert damper knobs into insertion holes

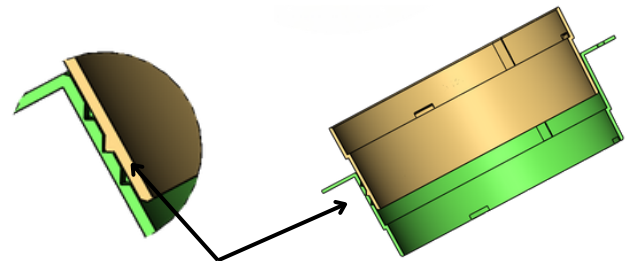


E MODULAR WALL VENT (MWV) J-CHANNEL APPLICATION

1 GROOVES AND LATCHES

Instructions:

- The J-Channel insert E1 allows the termination of exterior siding to the ducting while maintaining a weather resistant seal
- The locking grooves on the side allow height's ranging from 5/8" to 1-3/8"

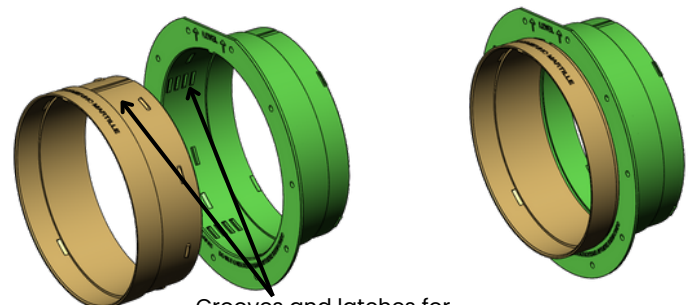


Grooves and latches for your designated height

2 ASSEMBLY

Instructions:

- Using the alignment tab and slot, using hand force gently insert the J-Channel E1 into the mounting flange A1, clicking it into the first groove
- The grooves and latches allow you to insert the J-Channel to the desired height needed to accommodate the exterior siding
- **DO NOT HAMMER**



Grooves and latches for your designated height

F MODULAR WALL VENT (MWV) REDUCER APPLICATION

1 REDUCER OPTIONS

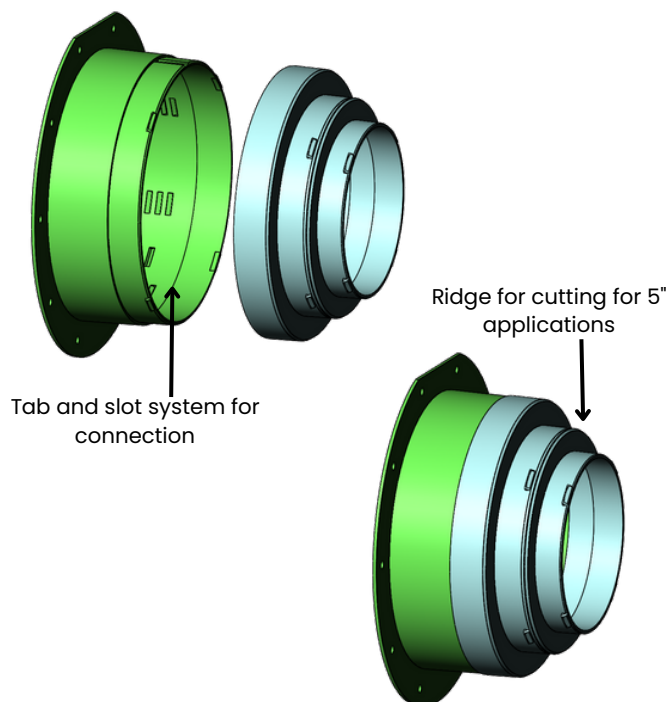
Instructions:

- The Reducer F1 can be inserted onto the back of the flange A1, allowing either 4" or 5" duct terminations to the vent
- Retention tabs on the reducer help secure the duct with a zip-tie or clamp
- Tab and slot system used for connection
- If 6" is desired, do not use reducer

2 ASSEMBLY

Instructions:

- Using the alignment tab and slot, gently slide the Reducer onto the mounting flange
- If the 5" piece is desired and 4" piece is not needed, it can be carefully clipped or sawed off and discarded
- DO NOT HAMMER



FAMCO[®] INSTRUCTION MANUAL MODULAR WALL VENT (MWV)

FOR ADDITIONAL
QUESTIONS,
CONTACT OUR
TEAM:

EMAIL:
SALES@FAMCOMFG.COM

WEB:
WWW.FAMCOMFG.COM

CONFIGURATION	CFM	MAX VELOCITY FT/MIN	FREE AREA SQ. IN.
6" No Screen	245	1250	26.9
6" Standard Screen	245	1250	23
6" Micro Screen	245	1250	15
5" No Screen	170	1250	17.9
5" Standard Screen	170	1250	17.9
5" Micro Screen	170	1250	15
4" No Screen	109	1250	11
4" Standard Screen	109	1250	11
4" Micro Screen	109	1250	11